

midibEAST®

JEI
Solutions
Built for Industry

MIDIBEAST™

A RUGGED PERFORMER, DESIGNED FOR INTENSIVE DRILLING APPLICATIONS.

The MiniBeast™ has got a big brother. Designed to lessen the load on smaller magnetic drilling machines, to make sure heavier drilling applications which require larger holes can be completed in time and without machine overload.



- ✓ 1600 W powerful motor with heavy duty 2 speed gearbox.
- ✓ Self aligning slide rails for maintenance free operation.
- ✓ Rigid casting designed to withstand downwards drilling force, prolonging the cutter life.
- ✓ Large capacity coolant container, for more holes without re-fill.
- ✓ Hidden motor cable - for added protection.
- ✓ Machine includes: plastic carrying case, cooling system, 3 x spoke handles, safety strap, 4 mm T handle wrench and operator's manual.



DESIGNED SPECIFICALLY FOR USE WITH EITHER TCT OR HSS ANNULAR BROACHING CUTTERS UP TO 65 MM DIAMETER WITH A DIRECT FEED 19 MM (3/4") SHANK DRIVE, TO INCREASE THE STABILITY OF THE CUTTING PROCESS, REDUCE RUN OUT AND EXTEND TOOLING LIFE.

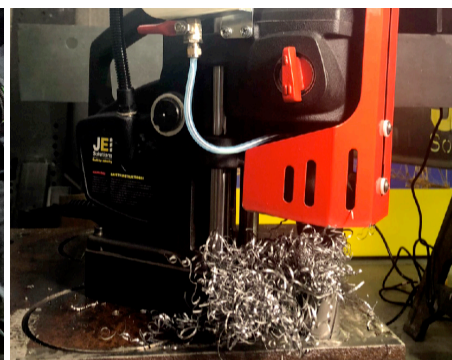
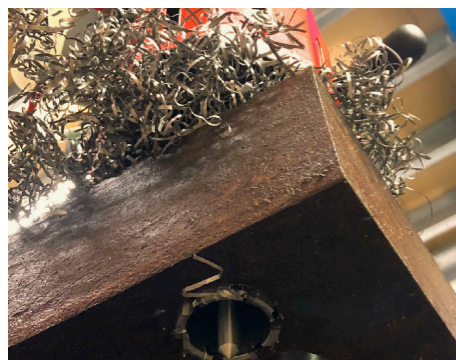
CALL 01706 229 490 TO BOOK YOUR DEMONSTRATION NOW OR VISIT WWW.JEIUK.COM



WHY THE MIDIBEAST™?



GALLERY



CALL **01706 229 490** TO BOOK YOUR DEMONSTRATION NOW OR VISIT **WWW.JEIUK.COM**



MIDIBEAST™ SPECIFICATIONS

Model: MIDIBEAST™

Weight: 17 kg

Cutter Capacity: 65mm Ø x 3" depth of cut

Twist Drill Capacity: 12 mm with optional Turbo™ twist drills

Motor: 1600 watts

Height Min/Max: 420 / 511

Length: 350 mm

Width: 215 mm (with spoke handles)

RPM: 2 Fixed Speed (loaded 160/390 RPM)

Magnetic Base Dimensions: 180 mm x 90 mm

Magnet Deadlift (on 25mm plate): 1122 kg on 1" Plate (11000 N)

Noise Level: < 100dB

Vibration Level: < 2.5 m/s²

Voltage / Part Number: 110 V - DRILL-MBD1 240 V - DRILL-MBD2

Shipping Weight: 22 kg

Shipping Dimensions: 680 mm x 460 mm x 170 mm

CALL 01706 229 490 TO BOOK YOUR DEMONSTRATION NOW OR VISIT WWW.JEIUK.COM